

Space:Maker Mirrorline™

Frameless Sliding Wardrobe Mirror-Door System



Space:Maker Mirrorline™
This quality product represents
a variation of the Australian
Design Award-winning
Space:Maker Softline™
Sliding Wardrobe Door System.

*Independent specialists have carefully assessed it
against 42 design factors covering:*

- Performance • Maintenance • Value • Ease of use
- Durability • Appearance • Safety • Construction

The Australian Design Award recognises
well-designed products of International Standard.
STANDARDS AUSTRALIA ✓

Proudly Australian made and exported

Space:Maker Mirrorline™

Frameless Sliding Wardrobe Mirror-Door System

Features

- round, modern appearance
- large 41mm diameter rollers and brackets for quiet operation and ease of adjustment
- design-registered anti-jump device prevents door panels from jumping off the track
- matching infill buffers on grip stile
- foot-friendly, easy-to-clean track
- 10-year guarantee on frame and components
- **Space:Maker Mirrorline™** represents a variation of the Australian Design Award-winning **Space:Maker Softline™** Sliding Wardrobe Door System.

Design Flexibility

Made to suit your individual requirements.

Space:Maker Mirrorline™ wardrobes are suitable for either wall-to-wall recessed or corner return installations. Constructed from high quality aluminium extrusions **Space:Maker Mirrorline™** is designed to suit most situations and door heights up to three metres. (Please note: Bracing of door panels may be required for oversize applications).

Exceptional Value

Indulge your imagination and create an absolutely premium wardrobe design at a surprisingly affordable price.

Safety

Space:Maker Mirrorline™ Sliding Wardrobe Door System is glazed to comply with the requirements of Australian Standards AS 1288 and AS 2208.

Product Guarantee

Space:Maker Mirrorline™ components and frames carry a 10-year guarantee when used under normal operating conditions.



Modern Contoured Cushioning

Matching infill buffer with panel stile eliminates metal-to-metal contact and gives **Space:Maker Mirrorline™** a smooth, modern contoured appearance.

Perfectly Secure Panels

An anti-jump feature, which is incorporated in the design-registered head channel spacers, ensures the panels cannot jump the track and provides quiet rattle-free operation.



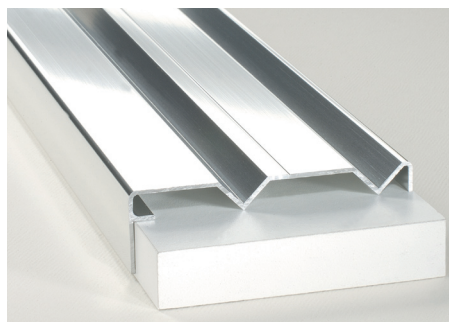
Handle Selection

A selection of subtle, low-profile mirror and stainless steel handle options complete the frameless appearance.



Low Profile Bottom Track

Space:Maker Mirrorline™ with its foot-friendly, unobtrusive, low-profile design and easy-to-clean track, Roller side-play is virtually eliminated, producing a smoother sliding operation.



Smooth Roller Gliding

Large 41mm diameter, round-tyred rollers, combined with a strong metal adjustment bracket, ensure quiet operation and more roller adjustment than is ever likely to be needed. Open design and construction enables easy cleaning and prevents accumulation of dust.



Panel Variety

Space:Maker Mirrorline™ is available in clear or tinted anti-shatter, safety-backed mirror panels, plus a wide range of coloured safety glass panels.

Colour Selection

	Black
	Rose Ash
	Wild Grey
	White Birch
	APO Grey
	Tropics
	Almond Cream
	Almond Ivory
	White
	Bright Satin
	Bright Bronze
	Bright Gold
	Bright Natural
	Matt Bronze
	Matt Gold
	Matt Natural

Special colours available on request.

Obligation-free measure & quote

Please call for an obligation-free measure and quote, and also ask for details on matching:

MIROX FINELINE™ Mirror Framing Systems, the Australian Award-winning Space:Maker Softline™, MIRRORLINE™, STRONGLINE™ and PANELDOOR™ Sliding Wardrobe Systems. The Australian Design Award-winning SERIES 9300™ Sliding Shower Screen range, the Australian Design Mark INTEGRITY 9400™ Pivoting Shower Door System range. FREESTYLE™ Bath Screen Systems. PROFILE™ 2040, CONTOUR™ 2050, MIRAGE3050™, EDEN3040™ Perimeter Framed Shower Screen Systems.

Available from: